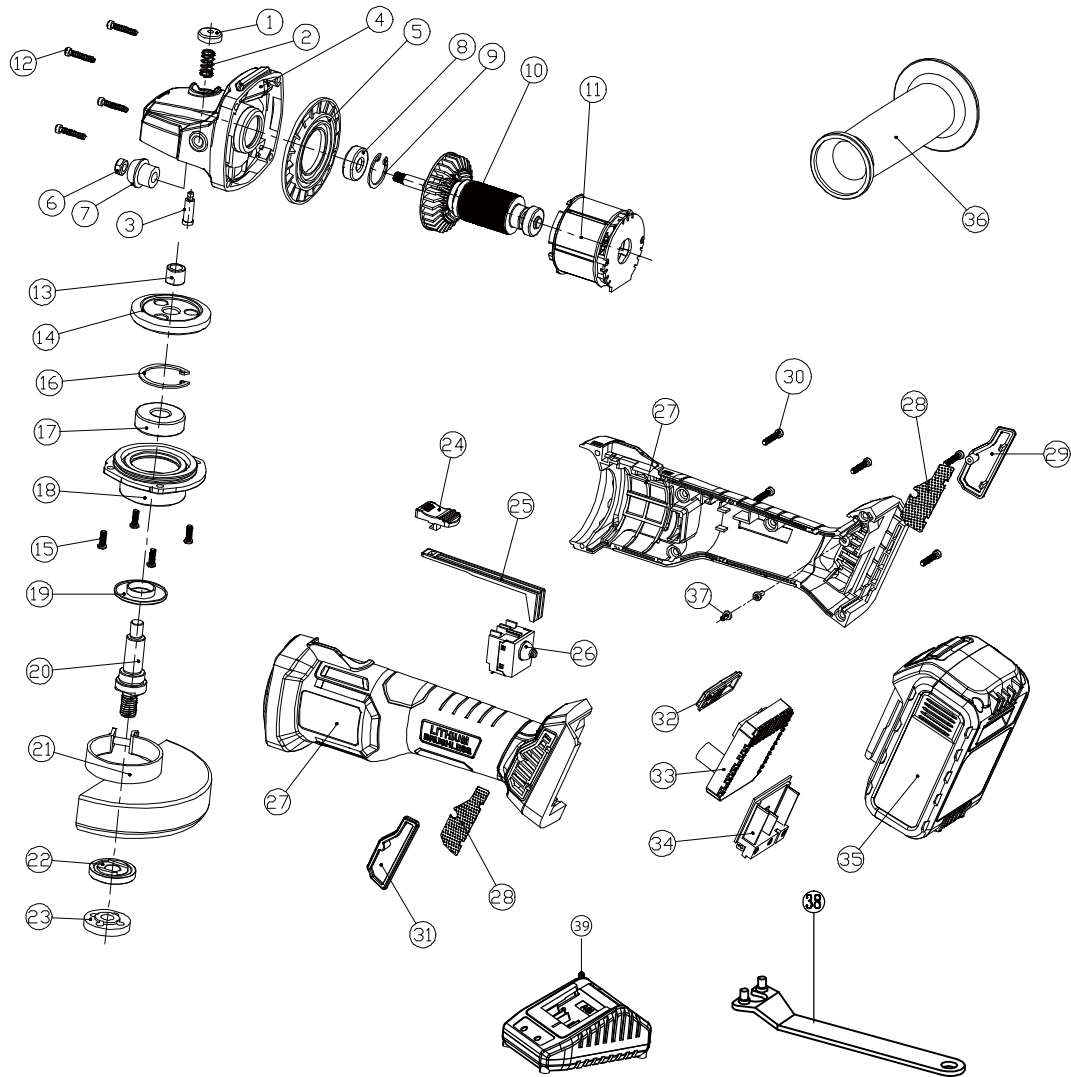


PM-CAG-18VB-2B



| ITEM | DESCRIPTION | QTY | ITEM | DESCRIPTION | QTY |
|------|--|-----|------|------------------------------------|-----|
| 1 | Brake Cap | 1 | 21 | Protective cover 9525 | 1 |
| 2 | Angle grinder 0.6 brake pin spring | 1 | 22 | 125 / 9523 inner pressing plate | 1 |
| 3 | Brake rod | 1 | 23 | 125 / 9523 external pressing plate | 1 |
| 4 | Aluminum head shell | 1 | 24 | Push-block | 1 |
| 5 | Guide ring | 1 | 25 | Push-pull rod | 1 |
| 6 | M6 nut | 1 | 26 | Switch | 1 |
| 7 | Brushless Angle grinder small umbrella teeth | 1 | 27 | Housing | 1 |
| 8 | 608VV bearing | 1 | 28 | L/R screen trim cover | 2 |
| 9 | 22 hole circlip | 1 | 29 | Right screen trim cover | 1 |
| 10 | Rotor of BLDCM | 1 | 30 | ST4*18 plum blossom pan head | 5 |
| 11 | BLDCM stator | 1 | 31 | Left screen trim cover | 1 |
| 12 | ST4*20 plum blossom pan head | 4 | 32 | 801 stents | 1 |
| 13 | HK0810 needle | 1 | 33 | Control board | 1 |
| 14 | Brushless Angle grinder large umbrella teeth | 1 | 34 | Pin | 1 |
| 15 | M4*12 cross armor-head combination | 4 | 35 | Battery pack | 2 |
| 16 | 32 hole circlip | 1 | 36 | Deputy hand | 1 |
| 17 | 6201 bearing pedestal bearing | 1 | 37 | ST3*6 plum blossom pan head | 2 |
| 18 | Bearing Block | 1 | 38 | Angle grinder wrench | 1 |
| 19 | 9556HN principal axis Dustproof ring | 1 | 39 | Charger | 1 |
| 20 | Angle grinder shaft | 1 | | | |