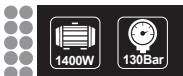


Polymak®

Solutions Provider For Industry & Trade

HIGH PRESSURE WASHER
PMCW130



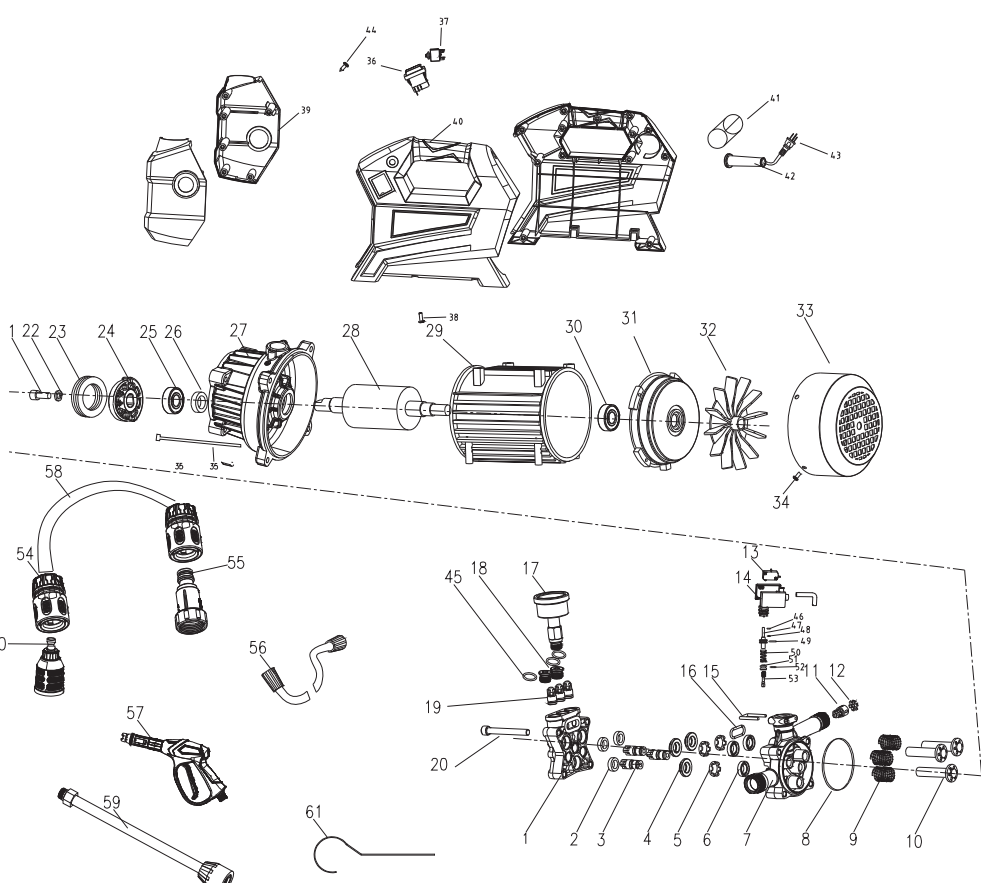
Power:1400W Working Pressure:130Bar Flow Rate:480L/H



Polymak®

Solutions Provider For Industry & Trade

PMCW130



Polymak®

Solutions Provider For Industry & Trade

PMCW130

| 序号 | 名 称 | 数量 | 序号 | 名 称 | 数量 |
|----|------------------|----|----|-----------------|----|
| 1 | 精加工泵体 | 1 | 33 | 风叶罩 | 1 |
| 2 | 水封 | 3 | 34 | 带垫片螺丝 | 3 |
| 3 | 进水单向阀 | 3 | 35 | 螺丝(3250)(5x160) | 4 |
| 4 | 铝压圈 | 3 | 36 | 船型开关 | 1 |
| 5 | 塑料件压环 | 3 | 37 | 过载保护器(7A直角) | 1 |
| 6 | 油封 | 3 | 38 | 大扁头螺丝(度镍5x10) | 8 |
| 7 | 精加工泵座 | 1 | 39 | 左右罩SU-387 | 1 |
| 8 | O型圈(70x2) | 1 | 40 | 机壳387 | 1 |
| 9 | 柱塞弹簧 | 3 | 41 | 电容30UF | 1 |
| 10 | 柱塞 | 3 | 42 | 护套 | 1 |
| 11 | 保压阀(塑料W001) | 1 | 43 | 电缆线 | 1 |
| 12 | 六齿档片 | 1 | 44 | 盘头十字螺丝 | 19 |
| 13 | 微动开关 | 1 | 45 | O型圈(12x1.8) | 3 |
| 14 | 微动开关塑料盒 | 1 | 46 | 四氟挡圈4x7-1.5 | 1 |
| 15 | 插销(U型插销) | 1 | 47 | 铜阀芯 W001 | 1 |
| 16 | O型圈(21x2.5) | 1 | 48 | O型卷3.8x18-N80 | 1 |
| 17 | 压力表 | 1 | 49 | O型圈12x1.8-N80 | 1 |
| 18 | 堵头螺丝 | 2 | 50 | 弹簧 1.8x26 | 1 |
| 19 | 出水单向阀(塑料12) | 3 | 51 | 塑料 阀座 | 1 |
| 20 | 内六角螺丝(M6x65mm) | 4 | 52 | O型圈8.5x2 | 1 |
| 21 | 内六角螺丝 | 1 | 53 | 阀芯螺丝 不锈钢螺丝M5 | 1 |
| 22 | 弹垫 | 1 | 54 | 快接 | 2 |
| 23 | 平面轴承(51107H(双片)) | 1 | 55 | 透明过滤咀 | 1 |
| 24 | 毛坯斜盘(10度) | 1 | 56 | 高压管 | 1 |
| 25 | 轴承(6303) | 1 | 57 | 枪 | 1 |
| 26 | 油封 | 1 | 58 | 钢丝2.5米进水管 | 1 |
| 27 | 精加工 油缸 | 1 | 59 | 加长杆 | 1 |
| 28 | 转子成品 | 1 | 60 | 过滤网 | 1 |
| 29 | 定子带壳 | 1 | 61 | 通针 | 1 |
| 30 | 轴承(6202) | 1 | 62 | | |
| 31 | 精加工后盖(W001本色) | 1 | 63 | | |
| 32 | 风叶(110电机) | 1 | 64 | | |

Polymak®

Solutions Provider For Industry & Trade

PMCW130

Step 1:Pay attention to screwing the quick coupling and water inlet pipe.Then immerse one end of the water inlet pipe float.

Step 2:Insert the plug of power line with leakage protector(figure8)into the outlet(figure 8-1). If pushing it the indication light is on.It means connected well.Then turn on the switch.

Step 3:when lots of water comes out from the water inlet(figure 7),turn off thepower switch.(Do make the output pipe don't point to people)

Step 4:connect the high pressure tub pikestaff with the machine.

IV.Warning of safety

When the machine is used,don't place it on the floor where is much water.

When starting the machine,please don't look at the short gun avoid of accident injure.

In use,please don't point it any animal and human.

1.Warning:This type of machine should be away from the place of corrosive place.It should not be used for pesticide,diluent,Solvent and other Hazardous or corrosive liquid.

2.Warning:please make sure the power is with earth line.

3.Warning:Please don't break the wire or drag hard of the wire.

Please don't put the wire near the fire or heat reservoir.Be away from the sharp object to do harm to the machine.If there are broken wire somehow,please stop use it immediately and send it to the repair house of us.

4.Warning:this product can only be used from 0℃ to 40℃ ,

5.Warning:After finishing each job,cut off power and release the pressure in the machine.

6.Warning:don't let high pressure water pipe be rolled by heavy articles,vehicles or place such pipes near articles with sharp edges or bend them at a large angle but ensure these pipes have a good seal performance when they are connected.

7.Warning:this machine only could be used in open outdoor.

When it is crowd people,please don't use it.

8.Warning:When the high pressure tube or pikestaff have problems,please stop using it.

9.Warning:when we pausing using the machine,please open the safety lock(it is located in the back of wrench)

10.Warning:the people should not use this machine who doesn't know this product or experience, or the one who is not in good condition,or the children.

11.The water after passing this machine is not used for drinking.

V.Suggestions for application

When articles are washed.Cleaning should be implemented from top to bottom,the

Trajectory according to the articles that need to wash.

Please don't use the machine for a long-time continuous operation,because it would shorten its service life.The continuous work time has better exceed 2 hours.

Polymak®

Solutions Provider For Industry & Trade

PMCW130

Since each machine is tested under its operation,it is normal that there are several drops of water in the machine..

VI.Product maintenance

1.This machine is not used for professional and commercial cleaning.

2.After 30days of using after buying this machine,please change the engine oil.(international 32#engine oil).After the first 30days use,every 6 months to change the engine oil.

3.When using the machine,please put some butter into the seal ring.Please keep the machine clean.If you don't use the machine in a short time,please dry all the waters in the machine.

4.Please don't use the dirty water to inlet.

5.When the strainer of water inlet tap is with some dirty,please clean it.And check the seal ring of water inlet tab is working or ageing.

6.Please don't put the machine in the place where is too wet.

VII.Common problems and fault removal

A.The machine has poor self-suction function and no water suction for a long time

Some reasons may cause it:1.If the water inlet tab is not sealed,the air is input,it would not self suction. Please also check the inlet pipe.

2.The water is too dirty.It would block the strainer.

3.The high pressure pipes is not twisted off or after turing on machine,the user has not put the trigger. If the high pressure pipe is not twisted from the machine,the suction would be very show.It would also shorten the life of the machine.

The correct way is to twist off the high pressure pipe first,and after the output some water,shut the button,and connected the high pressure pipe.

B.The output of water from pipe suddenly too much or too little It means the output of pikestaff is somehow stocked.The stock would active the overload protection work.

Solution:Please put off the electric,and using the cleaning needle to clean it.Do be aware that it may have high pressure water coming out.

C.The machine is not working.

1.Please check the indicator of the power.Please check the switch is on or off.

2.To check the high pressure pikestaff is frequent or not.

3.To check the button of pressure.(it is in the side of yellow plastic box of pressure meter)

Do cut off the electric,and check the limitation button is normal or not.

D.The machine can't stop

1.To check the removable possible caused for the foregoing problems one by one.

To check the switch is available or not

2.To check the valve of pressure is normal or not.If having some dirty,fetch it out.Please also check the seal ring and the spring of distance.

Polymak®

Solutions Provider For Industry & Trade

PMCW130

E.The Shock and numbness in the high pressure pipe after starting use.

1.There is some air coming into the seal ring.

2.There are some dirt thing stocked the strainer,it makes the water could not frequently coming out.

3.There is something getting into the valve.And it makes the valve working abnormal.

Polymak®

Solutions Provider For Industry & Trade

PMCW130