

SIZE:142X210MM

Polymak®

Solutions Provider For Industry & Trade

Polymak Tools(India)Pvt.Ltd

186/187, P.H Road,Alsa Towers,Kilpauk,
Chennai – 600 010,

Tel. : +91-44-48631869

E-mail : info@polymak.co.in

Visit us at : www.polymak.co.in

Polymak®

Solutions Provider For Industry & Trade

VACUUM CLEANER

PMVC15L

INSTRUCTION MANUAL



Read and follow all safety precautions in instruction manual.

Attention:

If the supply cord is damaged, it must be replaced by the manufacturer or its service agent to a similarly qualified person in order to avoid a hazard.

Before cleaning or maintaining the appliance, the power plug must be removed from the socket-outlet

- Attention: Before assembly and starting operation, read the operating instructions carefully
- Check that the mains voltage corresponds to the details on the type plate
- Pull the mains plug out of the socket when: the unit is not in use, before opening the unit, before cleaning and maintenance
- Never clean with solvents
- Do not use the cable to pull the plug out of the socket
- When unit is ready for use, do not leave unattended
- Safeguard from children
- Care must be taken that the mains connection lead is not damaged by being driven over, crushed, stretched, etc
- The unit must not be operated if the mains connection lead is not in perfect condition
- Replacement mains connection leads must not differ from the versions indicated by the manufacturer
- On no account vacuum: burning matches, glowing ashes and cigarette ends, inflammable, corrosive, fire hazard or explosive substances, vapors and liquids
- This unit is not suitable for vacuuming dust which is damaging to health
- Store the unit in a dry place
- Do not operate a deflection unit
- Servicing only by an authorized after-sales service point
- Use only for operations for which the unit is intended
- Take great care when cleaning stairs
- Use only manufacturer's attachments and spare parts

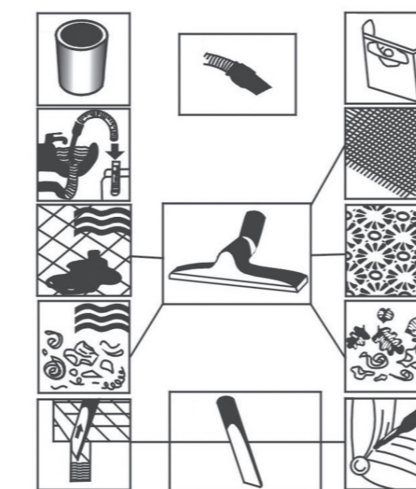
Technical data:

Rated voltage: 100V~120V, 220V~240V Normal frequency: 50Hz, 60Hz

Rated power: 800W, 1000W, 1200W, 1400W, 2000W, 3000W.

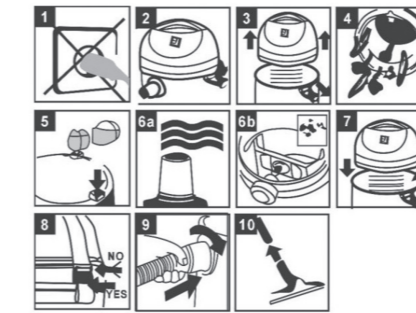
Capacity: 12L, 15L, 20L, 25L, 30L, 35L, 50L, 60L, 70L, 80L, 100L

Overview of nozzles



1

Assembly



Please note:

Figure 6a: Use the supplied foamed plastic filter for wet vacuum-cleaning

Figure 6b: Use the supplied dust bag for dry vacuum-cleaning

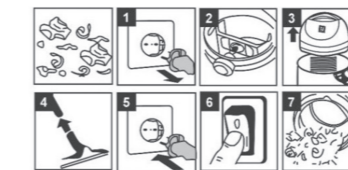
Wet vacuum - cleaning



Pull the supplied foamed plastic filter over the filter basket (Figure 2) for wet vacuum-cleaning.

The dust bag included upon delivery is not suitable for wet vacuum-cleaning!

Dry vacuum-cleaning



Slip the dust bag onto the socket (figure 2) for dry vacuum-cleaning.

The dust bag is suitable only for dry vacuum-cleaning!

Blowing



Maintenance cleaning



2