

# Polymak<sup>®</sup>

**Polymak Tools(India)Pvt.Ltd**

186/187, P.H Road,Alsa Towers,Kilpauk,  
Chennai – 600 010,

Tel. : +91-44-48631869

E-mail : info@polymak.co.in

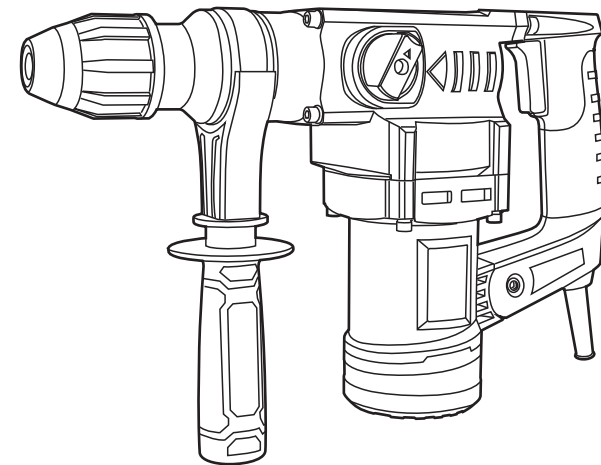
Visit us at : www.polymak.co.in

# Polymak<sup>®</sup>

## ROTARY HAMMER

### PM28RH

INSTRUCTION MANUAL



**Read and follow all safety precautions in instruction manual.**



## 1. Items supplied

1 pair carbon brush  
1 pc grease tube  
1 pc auxiliary handle  
1 pc hammer drill

## 2. Technical data

<b>PM28RH ROTARY HAMMER</b>	
Voltage	220V~
Frequency	50Hz
Input Power	800W
No-load Speed	815rpm
Impact Rating	4770bpm
Impact Joules	4J

## 3. Safety regulations

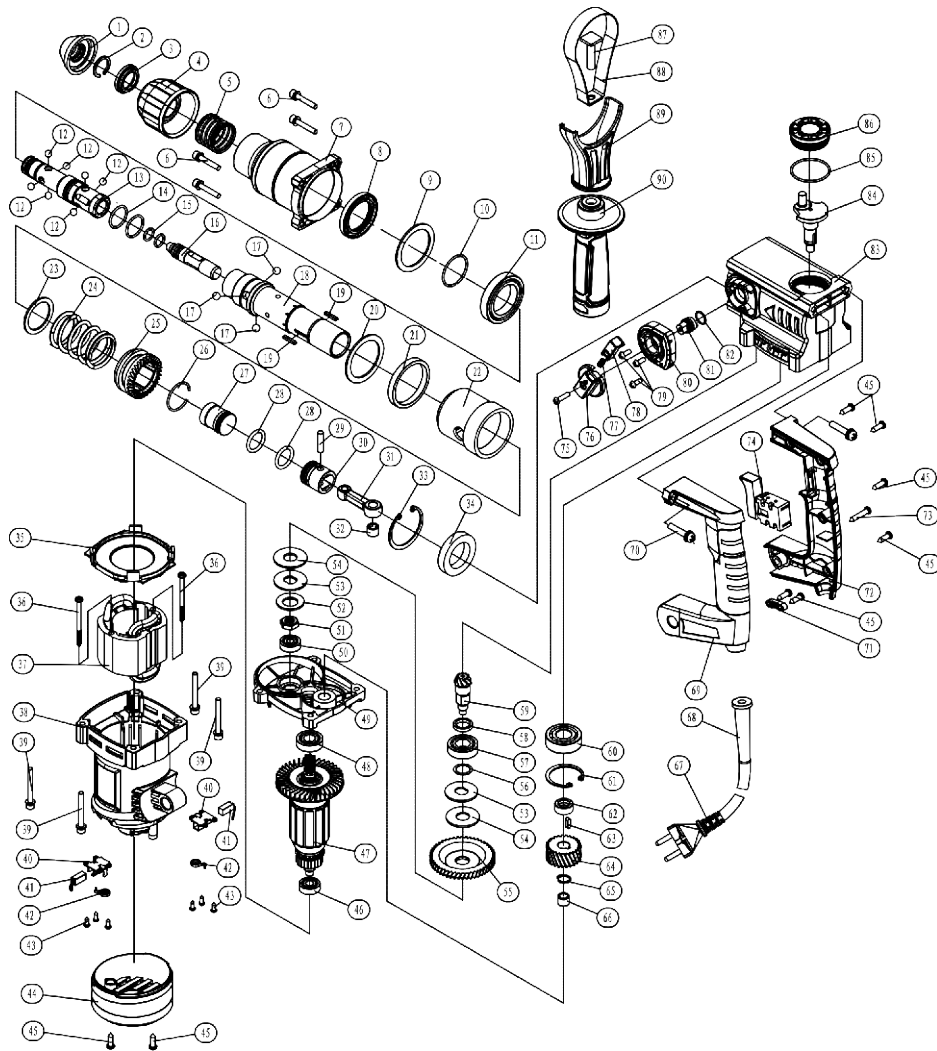
Important to protect yourself from the risk of electric shock ,injury and fire when using an electric tool, it is imperative to take the following basic safety.

Precautions.Read and note these instructions before you use the machine.

- Check the voltage marked on the rating plate.
- When using cable drums, run all the cable off the drum. Minimum conductor cross section:1.0mm<sup>2</sup>.
- When using the electric hammer drill outdoors, connect to the power supply with a type H07RN-F 3G1.5mm<sup>2</sup> extension cable and rain-water-protected plugs in proper working order.
- Make sure of your footing on ladders and fastened safety belt when drilling free-handed.
- Wear earmuffs to protect your hearing. loss of hearing can be a gradual process.
- Wear goggles and use a dust mask on jobs generating dust.
- Do not use in areas where there are vapours or flammable liquids.
- Always pull the plug out of the socket before cleaning or making changes to the machine.
- Protect the power cable from danger. Oil and acid can danger the cable.
- Never overload the machine.
- Secure all workpieces sufficiently.
- Important it is imperative to follow all national safety regulations concerning installation, operation and maintenance.
- Chisel bits and drill bits may be flung out of the machine accidentally and cause serious injury
- Before starting to work, always check that the chisel or drill bit is properly locked in the chuck.
- Examine the chuck regularly for signs of wear or danger.
- Never start up a hammer tool until it pressed against a workpiece (wall, ceiling. etc.)
- When you are finished, unplug the electric hammer from the electric supply and remove the chisel or drill bit from the machine.
- Always disconnect the hammer drill from the electric supply before you change a chisel or drill bit.
- Protect your eyes and other workers from flying particles and splinters.wear a helm-

PM28RH ROTARY HAMMER PARTS LIST					
NO.	DESCRIPTION	QTY.	NO.	DESCRIPTION	QTY.
1	dust proof cover	1	46	bearing 608	1
2	D19 spindle steel circlip(65Mn)	1	47	armature	1
3	limit cover	1	48	bearing 6001	1
4	sleeve	1	49	middle cover	1
5	sleeve spring (φ31.5-φ35) × φ2×76	1	50	bearing 627	1
6	screw M5×30	4	51	M10 nut	1
7	front cover	1	52	spring 16	1
8	oil seal φ35×φ51×6(FKM)	1	53	Friction plate gasket	2
9	washer φ43×φ54.9×2	1	54	Friction plate	2
10	D35 spindle steel circlip(65Mn)	1	55	clutch gear	1
11	bearing 61907	1	56	washer φ14.5×φ19.5×0.5	1
12	Sφ7.14 steel ball (GCr15)	7	57	bearing 6002	1
13	rotating sleeve	1	58	spacing sleeve	1
14	0 ring φ20.8×φ2.1(FKM)	2	59	small pinion	1
15	0 ring φ11×φ1.9(FKM)	2	60	bearing 6202	1
16	strike rod	1	61	D35 hole circlip A type (65Mn)	1
17	Sφ7.938 steel ball (GCr15)	3	62	crankshaft spacing sleeve	1
18	cylinder	1	63	flat washer 4×4×12	1
19	flat washer 3×3×18	2	64	crankshaft gear	1
20	washer φ43×φ54.9×1	1	65	D12 spindle steel circlip(65Mn)	1
21	rectangular cushion φ54.5×φ47×7(TPU)	1	66	oil bearing	1
22	spacer	1	67	cable and plug	1
23	washer φ32.2×φ41.8×2	1	68	cable sleeve	1
24	clutch spring φ37.2×φ3.2×80	1	69	left handle	1
25	Cylinder liner gear	1	70	screw set M6×30	2
26	D30 spindle steel circlip(65Mn)	1	71	cable plate	1
27	strike hammer	1	72	right handle	1
28	0 ring φ19×φ3.1(FKM)	2	73	screw ST4.2×25	1
29	piston pin φ6×24.5	1	74	switch	1
30	piston	1	75	screw M4×10	1
31	link rod	1	76	button	1
32	oil bearing φ8×φ12×10	1	77	button slider spring φ5.3×φ0.5×20	1
33	D47 hole circlip A type (65Mn)	1	78	button slider	1
34	oil bearing φ30×φ47×9	1	79	screw M4×10	3
35	fan guide	1	80	button holder	1
36	screw ST4.8×60	2	81	adjustment shaft	1
37	fiel coil	1	82	0 ring φ10×φ1.5(FKMFP)	1
38	housing	1	83	gear box	1
39	screw set M5×48	4	84	crankshaft	1
40	brush holder	2	85	0 ring φ35×φ1.8	1
41	carbon brush	2	86	oil cap	1
42	flat spring	2	87	screw M8×50	1
43	screw ST2.9×12 C type	6	88	clamp	1
44	rear housing	1	89	holder	1
45	screw KA40×16	8	90	side handle	1

## PM28RH ROTARY HAMMER EXPLODED VIEW



et ! Set up partition walls!

- Wear work gloves to protect fingers from bruising and grazing.
- Vibrations can injure the hand–arm system. Keep exposure to vibrations as short as possible.
- Always lead the mains cable away backwards from the device.
- Store the device where it is inaccessible to children.
- When carrying out work, always hold the device with both hands and ensure that it has a stable standing position.

You will find further safety instructions for electric tools in the enclosed booklet

### 4. Homework

- Examine the place where device is to be used for hidden electrical cables, gas and water pipes using a pipe finding device.
- Before connecting to the mains, ensure care that the mains voltage corresponds to the details on the nameplate.

### 4.1 Fitting and changing tools

The device is equipped with a SDS–plus attachment system.

- Clean tools and grease with a thin layer of machine grease before fitting.
- Pull back fastening sleeve (A, Fig. 2)
- Push and rotate the dust-free tool into the tool holder as far as it will go. The tool will lock automatically.
- Check that it has locked by pulling the tool.

### 4.2 Removing SDS–plus tool. (FIG. 3)

Pull back fastening sleeve. hold and remove tool.

### 5. Starting work

#### 5.1 Switching ON/OFF

- Switching on: press the operating switch.

- Continuous duty: lock the switch with the locking button.
- Switching off: press the operating switch briefly and let go.

### 5.2 Handle attachment

For reasons of safety, only use the hammer drill with handle attachment. You will be able to obtain a safe body position when working by rotating the handle attachment. Loosen and turn the handle attachment in an anticlockwise direction. Then tighten the handle attachment.

### 5.3 Depth stop

Loosen the handle attachment and place the straight part of the depth stop anew. Tighten the handle attachment.

### 5.4 Dust collection device

Before carrying out hammer-drilling work vertically overhead pull dust collecting device over the drill bit.

### 5.5 Hammer stop

Your hammer drill is equipped with a hammer stop facility for smooth drilling. To deactivate the hammer action, turn the lever switch clockwise to position. To reactivate the hammer action, the lever switch has to be reset to position.

### 5.6 Drill stop

You can deactivate the drilling action of the hammer drill when using it for chiseling work.

To do so, turn the lever selector so that the mark coincided with the arrow on the machine case.

To reactivate the drilling action, the lever selector has to be reset so that the mark coincided with the arrow.

### Important

When hammer drilling you will require a low pressure. Too much pressure will place unnecessary load on the motor. Check the drill bits regularly. Resharpen or replace blunt drill bits.

## 6. Maintenance

- Remove the mains plug from the socket before carrying out any work on the device.
- Keep your machine clean at all times.
- Never use caustic agents to clean the plastic parts.
- At the end of your work. To prevent dust deposits you should use compressed air (max.3bar) to clean out the ventilation slots.
- Check the carbon brushes regularly (dirty or worn carbon brushes result in excessive sparking and speed faults).

## 7. Ordering replacement parts

Please quote the following data when ordering replacement parts:

- Type of machine
- Article number of the machine
- Identification number of the machine
- Replacement part number of the part required