



KEN Holding Co., Ltd.

No.5 Xinrong Rd., Xinqiao Town, Songjiang District, Shanghai China

<http://www.kenpowertools.com>

KEN and KEN logo are registered trademarks of KEN Holding Co.,Ltd. All rights reserved. No other company may use KEN logo unless it has the express written permission of KEN Holding Co.,Ltd. or is licensed by KEN Holding Co.,Ltd.to do so.

Electric Drill



**6410ER J1Z-SH17-10A**



original instructions



## Original instruction

### GENERAL SAFETY INSTRUCTIONS

**⚠ WARNING! Read all instructions.** Failure to follow all instructions listed below may result in electric shock, fire and /or serious injury. The term "power tool" in all of the warnings listed below refers to your mains operated power tool.

#### SAVE THESE INSTRUCTIONS.

##### 1) WORK AREA

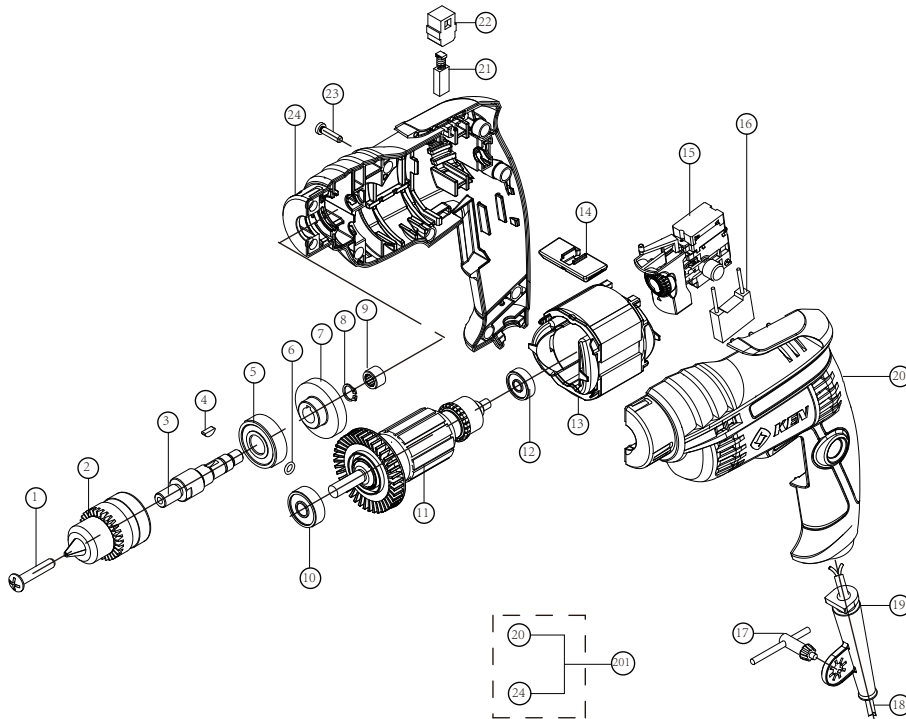
- Keep work area clean and well lit.** Cluttered and dark areas invite accidents.
- Do not operate power tools in explosive atmospheres, such as in the presence of flammable liquids, gases or dust.** Power tools create sparks which may ignite the dust or fumes.
- Keep children and bystanders away while operating a power tool.** Distractions can cause you to lose control.

##### 2) ELECTRICAL SAFETY

- Power tool plugs must match the outlet. Never modify the plugs in any way. Do not use any adapter plugs with earthed grounded power tools.** Unmodified plugs and matching outlets will reduce risk of electric shock.
- Avoid body contact with earthed or grounded surfaces such as pipes, radiators, ranges and refrigerators.** There is an increased risk of electric shock if your body is earthed or grounded.
- Do not expose power tools to rain or wet conditions.** Water entering a power tool will increase the risk of electric shock.  
**Do not abuse the cord. Never use the cord for carrying, pulling or unplugging the power tool.**
- Keep cord away from heat, oil, sharp edges or moving parts.** Damaged or entangled cords increase the risk of electric shock.
- When operating a power tool outdoors, use an extension cord suitable for outdoor use.** Use of a cord suitable for outdoor use reduces the risk of electric shock.
- If operating a power tool in a damp location is unavoidable, use a residual current device (RCD) protected supply.** Use of an RCD reduces the risk of electric shock.

##### 3) PERSONAL SAFETY

- Stay alert, watch what you are doing and use common sense when operating a power tool. Do not use a power tool while you are tired or under the influence of drugs, alcohol or medication.** A moment of inattention while operating power tools may result in serious personal injury.
- Use personal protective equipment. Always wear eye protection.** protective equipment such as dust mask, no-skid safety shoes, hard hat, or hearing protection used for appropriate conditions will reduce personal injuries.
- Prevent unintentional starting. Ensure the switch is in the off-position before connecting to power source and/or battery pack, picking up or carrying the tool.** Carrying power tools with your finger on the switch or energising power tools that have the switch on invites accidents.
- Remove any adjusting key or wrench before turning the power tool on.** A wrench or a key left attached to a rotating part of the power tool may result in personal injury.
- Do not overreach. Keep proper footing and balance at all times.** This enables better control of the power tool in unexpected situations.
- Dress properly. Do not wear loose clothing or jewelry. Keep your hair, clothing and gloves away from moving parts.** Loose clothes, jewelry or long hair can be caught in moving parts.
- If devices are provided for the connection of dust extraction and collection facilities, ensure these are connected and properly used.** Use of these devices can reduce dust related hazards.



#### 4) POWER TOOL USE AND CARE

- a) **Do not force the power tool. Use the correct power tool for your application.** The correct power tool will do the job better and safer at the rate for which it was designed.
- b) **Do not use the power tool if the switch does not turn it on and off.** Any power tool that cannot be controlled with the switch is dangerous and must be repaired.
- c) **Disconnect the plug from the power source and/or the battery pack from the power tool before making any adjustments, changing accessories, or storing power tools.** Such preventive safety measures reduce the risk of starting the power tool accidentally.
- d) **Store idle power tools out of the reach of children and do not allow persons unfamiliar with the power tool or these instructions to operate the power tool.** Power tools are dangerous in the hands of untrained users.
- e) **Maintain power tools. Check for misalignment or binding of moving parts, breakage of parts and any other condition that may affect the power tool's operation. If damaged, have the power tool repaired before use.** Many accidents are caused by poorly maintained power tools.
- f) **Keep cutting tools sharp and clean.** Properly maintained cutting tools with sharp cutting edges are less likely to bind and are easier to control.
- g) **Use the power tool, accessories and tool bits etc. in accordance with these instructions, taking into account the working conditions and the work to be performed.** Use of the power tool for operations different from those intended could result in a hazardous situation.

#### 5) Service

**Have your power tool serviced by a qualified repair person using only identical replacement parts.** This will ensure that the safety of the power tool is maintained.

#### 6) Drill Safety Warnings

- a) **Wear ear protectors when impact drilling.** Exposure to noise can cause hearing loss.
- b) **Use auxiliary handle(s), if supplied with the tool.** Loss of control can cause personal injury.
- c) **Hold power tool by insulated gripping surfaces, when performing an operation where the cutting accessory may contact hidden wiring or its own cord.** Cutting accessory contacting a "live" wire may make exposed metal parts of the power tool "live" and could give the operator an electric shock.

NOTE The above warning applies only to impact drills and may be omitted for drills other than impact drills.

Dear Customer,

Thank you for buying a KEN power tool. Should you have any questions, vagueness or second thoughts about our products, we recommend you to contact our experts in Sales and Service Departments, who will advise you and help you find the right answers to the set questions. Please contact our local distributors or dealers directly.

#### Attention!

Through poor conditions of the electrical MAINS, shortly voltage drops can appear when starting the EQUIPMENT. This can influence other equipment (eg. Blinking of a lamp). If the MAINS-IMPEDANCE  $Z_{max} < 0.272 \text{ OHM}$ , such disturbances are not expected. (In case of need, you may contact your local supply authority for further information).

#### PARTS LIST

No.	Code	Name	Remark	No.	Code	Name	Remark
1	233005	Screw	M5×22	22	432014	Brush holder	
2	628001	Drill chunk		23	221009	Screw	ST4×16
3	133156	Spindle		24	313219	Right shell	
4	276001	Key	φ3×10	201	712145	Motor housing assembled	
5	211125	Bearing	6201-2RS				
6	333018	O ring					
7	136145	Big gear					
8	252003	Retainer	φ10				
9	212007	Roller bearing	HK0808				
10	211132	Bearing	628-LBV				
11	442250	Rotor					
12	211006	Bearing	626-2Z				
13	441252	Stator					
14	323022	Switch button					
15	447055	Switch					
16	443007	Capacitor					
17	628002	Spanner					
18	411015	Power cord					
19	332012	Cord sleeve					
20	313218	Left shell					
21	431015A	Carbon brush					



## ■ MAINTENANCE AND CARE

- Unplug the tool from the socket before performing any works on the tool!
- Tool requires no special maintenance, but after some time you must control the parts that are submitted to wear-and-tear under normal operating conditions. This includes the control and replacement of carbon brushes and grease in reducing gear housing. Take the tool to an authorized service centre.
- Keep the tool and supply cord clean. Keep ventilation slots clean and open. Wipe the surface of the tool with a soft cloth!
- It is not allowed to use household cleaning agents that contain petrol, trichloroethylene, ammonia and chlorides. These substances corrode and damage plastic parts of the tool.
- Excessive sparking generally indicates the presence of dirt in the motor or abnormal wear on the carbons.
- In case of electric or mechanical failure, send the tool to a KEN authorized service centre for repair.

## ■ SERVICING AND REPAIRS

If servicing is required, contact one of our listed service centers. It is not allowed and dangerous to perform any individual work on the tool.

- Have the tool repaired by authorized persons.
- Any repairs of the tool in unauthorized service centers is performed at own responsibility.
- The owner of the tool is responsible for all works on the tool that were not performed in authorized service center, and therefore he loses the claim for guarantee.

## ■ WASTE DISPOSAL AND ENVIRONMENT PROTECTION

The machine, accessories and packing should be sorted for environmental-friendly recycling.

Only for EC countries:

- Do not dispose of power tools into household waste!

According the European Guideline 2002/96/EC for Waste Electrical and Electronic Equipment and its implementation into national right, power tools that are no longer usable must be collected separately and disposed of in an environmentally correct manner.

## ■ TECHNICAL DATA

Type	J1Z-SH17-10A 6410ER
Max. Diameter of Drilling Steel	Φ10mm
Current Source	AC 220-240V~ 50/60Hz
Rated Input Power	350W
Idling Rotational Speed	0~3000/min
Weight	1.5kg
Standard Spare Parts	Drill Chuck Wrench 1PC Operating Handbook 1PC

## SAFETY

Read these instructions before operating this power tool. They contain information which will enable you to use the tool safely and help protect those around you. A copy of this instruction leaflet should be kept with the tool so that you can refer to it quickly when undertaking work.

Another copy should be made and safely away.

- Please check the drill bit fix at right place before operating.
- Ensure that drill bit don't touch with workpieces and others before starting tools.
- It is necessary for long hair user to wear a calotte, and don't touch rotating parts with fingers and gloves when operating the tools in order to avoid enlacing.
- When drilling wall, floor board or other similar parts, should avoid gas pipe, water pipe and cable, and avoid to touch with steel parts.
- Please keep away touching with electric wire and drill bit when operating the tools.
- Don't lay down the rotating tools, to switch off before putting down the tools.
- Don't touch the drill chuck or other parts around drill chuck immediately after using the tools because the parts with high temperature will harm your skin.
- Use the same specified and double-insulation cable when prolonging electric wire.

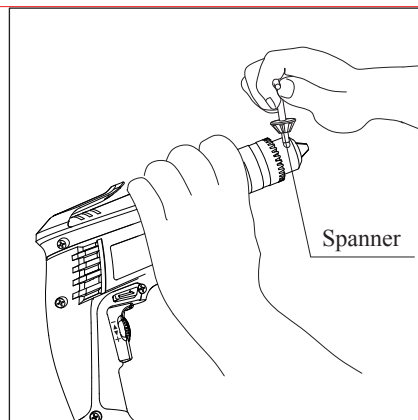
## ■ OPERATION

※Observe correct mains voltage: The voltage of the power source must agree with the voltage specified on the nameplate of the machine.

### ◆ Assemble or Disassemble the Drill Bit

Insert the drill bit into the clamping claw, insert the chunk wrench into the three bores on the chunk, and rotate the wrench in a clockwise direction until the drill bit is well clamped.

Rotate the wrench in a counter clockwise direction can make the chunk released to disassemble the drill bit (Picture One).



Picture 1

### ◆ Switching on/off

Press or release the on/off switch.

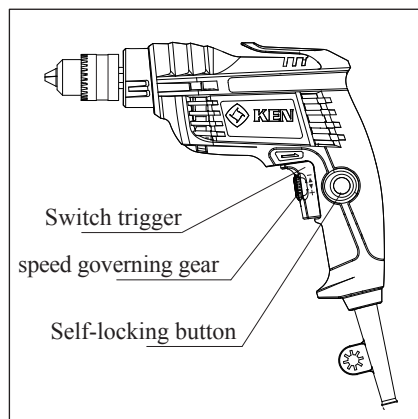
The on/off switch can be locked on with the locking button.

To release, briefly press and release the on/off switch.

The switch is with a speed governing gear. You can get the speed you need by rotating the gear and then press down the switch panel to get the speed setting done.

When the speed governing gear is turned to “+”, the speed will be increased.

When the speed governing gear is turned to “-“, the speed will be decreased.(Picture Two),).

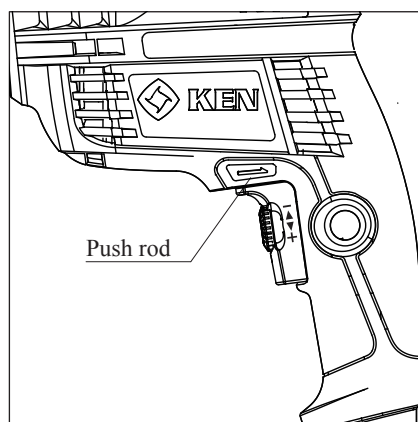


Picture 2

### ◆ Reversing Switch

Hold the tool, shift the reversing switch extracting rod to right, the tool turns right; shift it to left end, the tool turns left (Picture Three).

※Do Remember: Please wait until the tool stops completely before changing the rotating directions.



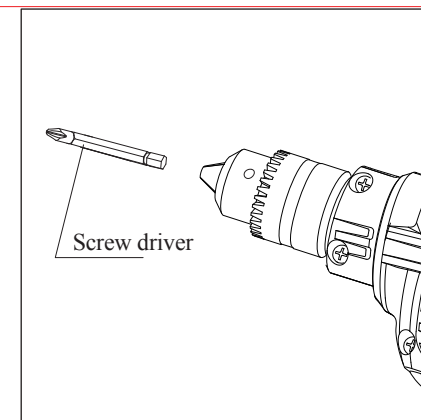
Picture 3

### ◆ Drilling Hole

Please use suitable cooling materials when drilling the thick and hard objects; otherwise it will influence the life of the drill.

### ◆ Tighten or disassemble the screw

The users can tighten or disassemble the screw with screw driver and adapt rod. (Picture Four).



Picture 4