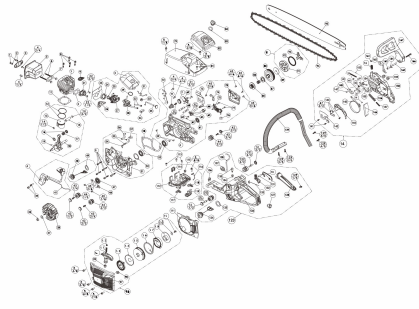


PMCS-58 ECO-18
PMCS-58 ECO-22 PETROL CHAIN SAW

Engine displacement: 58cc
Rated input power: 3.35kW
Fuel Tank Capacity: 5.66l
Idle Speed: 2800-3200/min
Two-cycle Oil/Gasoline Mixing Ratio: 1:25



PMCS-58 ECO-18 SPARE PARTS LIST

No	Part Name	Qty	Part No	INR	No	Part Name	Qty	Part No	INR
1	Nut M5	2	07		107	Hose Pump	1		
2	Spring Washer	2	08		108	Gaslet crank Case	1		
3	Shaftnut/Bush	1	09		109	Locking Pin D.6x9	3		
4	Screw M5x10	4	10		110	RHT - carbide	1		
5	Ball/Bear Assy	1	11		111	Oil Seal O-15x20x4.5	1		
6	Spacer Bolt M5x14	2	12		112	Breaker	1		
7	Clutch nut/bolt	1	13		113	Breaker Springs	1		
8	Screw M5x20	4	14		114	Ring For Springs	1		
9	Spool Ring	1	15		115	Oil Filter	1		
10	Cylinder Gb	1	16		116	Chain Guide Foot	2		
11	Clutch nut/bolt	1	17		117	Stud Bar M5x8	2		
12	Pluton Ring	2	18		118	Chain Catcher	1		
13	Pluton	1	19		119	Ring-Plastic	1		
14	Clips	2	20		120	Ring-Washer	1		
15	Pluton Pin	1	21		121	Spkr	1		
16	Needle Bearing Sprocket	1	22		122	Plate Bar	1		
17	Needle Bearing	1	23		123	Oil Pump	1		
18	Control/Bell Assy	1	24		124	Idle Oil Pump	1		
19	Key Synchral	1	25		125	Spring Oil Pump	1		
20	Clutch nut/bolt	1	26		126	Screw M5x14	2		
21	Intake Pipe	1	27		127	Spring Washer	1		
22	Screw Cross M5x14	3	28		128	Top Cover	1		
23	Gaslet Valve Support	1	29		129	Screw Fasten M5x18	5		
24	Fasten carburetor	1	30		130	Screw M5x16	2		
25	Eye-bolt carburetor	1	31		131	Air Filter Cover	1		
26	TT Guide Protection-carburetor	1	32		132	Control Knob	1		
27	Carburetor	1	33		133	Knock Air Filter Cover	1		
28	Air Filter Support/Support nut	1	34		134	Gas Valve	1		
29	Washer Air Filter	1	35		135	Swivel Bearing-steel K121014.5	1		
30	Air Filter	1	36		136	Sprocket	1		
31	Headshell	1	37		137	Drum-steel	1		
32	Screw M5x5	2	38		138	Washer-steel	1		
33	Controlled Clutch Lever	1	39		139	Clutch Assy	1		
34	Rubber Protection	1	40		140	Clutch Spring	1		
35	Clutch Lever	1	41		141	Clutch Body	1		
36	Nut M5 Synchral	1	42		142	Bar	1		
37	Washer	1	43		143	Chain	1		
38	Pin Washed Assy	1	44		144	Start Assy	1		
39	Screw M5x20	2	45		145	Start Assy	1		
40	Ignition Coil	1	46		146	Start Assy	1		
41	Electric Cable	1	47		147	Start Assy	1		
42	Plug/Lead Plug	2	48		148	Light Sensor	1		
43	Screw S5x12	6	49		149	Rope Buffering	1		
44	Electric Rubber Boot	1	50		150	Handle Buffering	1		
45	Screw Cross M5x8	6	51		151	Handle Spring	1		
46	Oil Seal-Lever	1	52		152	Cap Handle Spring	1		
47	Seal Oil B-15x20x4.5	1	53		153	COL SPRING 2.5x4.2x0.200	1		
48	Cap Assy-off	1	54		154	Spring Cover	1		
49	Washer nut Assy	1	55		155	Rope Buffering Wheel	1		
50	Screw M5x20	5	56		156	Rope Starter	1		
51	Lock Cartridge	1	57		157	Col Spring 12.5x0.600	1		
52	Stop Ring D15	1	58		158	Ratchet Wheel	1		
53	Ending Plate 15x15	2	59		159	Washer-Steel Nut	1		
54	Plastic Connector-hose Pulley	1	60		160	Screw S5x12	1		
55	Clutch Hose Plate	2	61		161	Weld Sprocket	1		
56	Anti-head Protection Tube	1	62		162	Rear Case-off	1		

PMCS-58 ECO-18 SPARE PARTS LIST

No	Part Name	Qty	Part No	INR	No	Part Name	Qty	Part No	INR
113	Screw M5x14	3			163	Spring	1		
114	End Board	1			164	Heavy Punch	1		
115	Rubber Damper	1			165	Table Heavy Punch	1		
116	Control Valve	1			166	Spring Heavy Punch	1		
117	Lift-Button-rubber	1			167	Tech-weld nut	1		
118	Right Sprocket-rubber	1			168	Screw M5x12	1		
119	Clutch-rubber	1			169	Handle Guard	1		
120	Plug anti-rust	2							
121	Sprocket Screw M5x14	2							
122	Damper Rubber Box	2							
123	Front Tank Assy	1							
124	Cap Assy-Just	1							
125	Chain Guide Foot	1							
126	Foot Tank	1							
127	Switch-top Assy	1							
128	Control Knob	1							
129	Screw S5x16	5							
130	Trigger Lock Lever	1							
131	Trigger-on-REUS	1							
132	Trigger	1							
133	Spring Trigger	1							
134	Weld Sprocket	1							
135	Weld	1							
136	Control Knob-rubber	1							
137	Foot Tank	1							
138	Foot Tank	1							
139	Handle Knob	1							
140	Brake System Assy	1							
141	Sprocket M5	2							
142	Tension Cover Plate	1							
143	Screw S5x10	3							
144	Brake Spring Cover	1							
145	Brake Band	1							
146	Brake Plate	1							
147	Pin Chain	1							
148	Brake Lever Assy	1							
149	Main Lever	1							
150	Brake Drum	2							
151	Drum Lever	1							
152	Roller	1							
153	Chain Tension Assy	1							
154	Tension Spring	1							
155	Photo-eye	1							
156	Brake Spring	1							
157	Brake-spring-2	1							
158	Chain Cover	1							
159	Flange Nut M5	2							
160	Spring	1							
161	Spring Seat	1							
162	Heavy Punch	1							
163	Table Heavy Punch	1							
164	Spring Heavy Punch	1							
165	Tech-weld nut	1							
166	Screw M5x12	1							
167	Handle Guard	1							