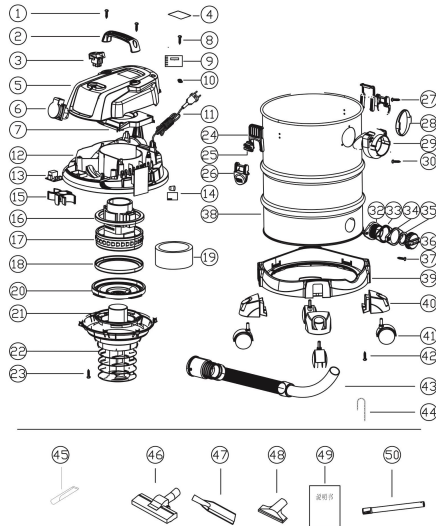


# Polymak®

**PMVC30L** 30L VACUUM CLEANER

Capacity : 30L  
 Vacuum: >18kPa  
 Power: 1200W  
 Net weight: 16.5KG



www.polymak.co.in

# Polymak®

## PMVC30L SPARE PARTS LIST

No	Parts Name	Pcs	INR	No	Parts Name	Pcs	INR	No	Parts Name	Pcs	INR
1	Handbar screw 4*14	2		38	Tank	1		75			
2	308 handbar	1		39	308 bottom base	1		76			
3	Switch(3P)	1		40	308 caster	4		77			
4	Label	4		41	Wheels	4		78			
5	308 top cover	1		42	Caster screw 4*14	4		79			
6	Synchronization socket	0		43	308 hose sets	1		80			
7	308 motor cover	1		44	Static chain	1		81			
8	Top cover screw 4*14	2		45	Crevice tool	1		82			
9	Synchronization circuit board	0		46	Floor brush	1		83			
10	Cabel press board+screw	1		47	Nozzle	0		84			
11	Cabel	1		48	Sofa brush	/		85			
12	Bottom cover	1		49	Manual	1		86			
13	Speed control circuit board+screw	0		50	Tube	1		87			
14	Speed control switches	0		51				88			
15	303 accessories racks	0		52				89			
16	Top sealing ring of motor	1		53				90			
17	A24 motor	1		54				91			
18	Bottom sealing ring of motor	1		55				92			
19	Motor noise reduction sponge	1		56				93			
20	Bottom frame for motor	1		57				94			
21	203 safety valve	1		58				95			
22	308bottom cover basket	1		59				96			
23	Bottom cover basket screw 4*20	6		60				97			
24	308 clamps	2		61				98			
25	308 clamps base	2		62				99			
26	308 clamps handle	2		63				100			
27	Clamps screw 4*14	6		64				101			
28	308 air-inlet sets sealing ring	1		65				102			
29	308 air-inlet sets	1		66				103			
30	Air-inlet sets screw 4*14	4		67				104			
31				68				105			
32	308 water outlet base	1		69				106			
33	308 water outlet base sealing ring	1		70				107			
34	308 water outlet press board	1		71				108			
35	308 water outlet cover sealing ring	1		72				109			
36	308 water outlet cover	1		73				110			
37	Water outlet set screw 4*14	2		74				111			