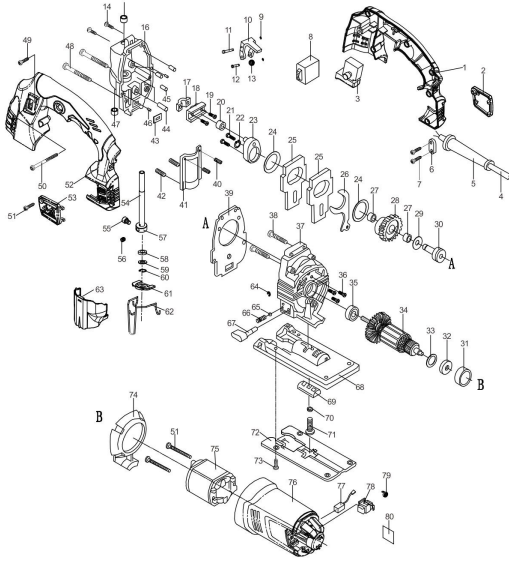


Polymak®

PM60JGE 60MM JIG SAW

Max. cutting capacity in wood at 90° :	60mm
Max. cutting capacity in steel at 90° :	10mm
Strokes per minute:	500-3000r/min
Power:	600W
Net weight:	2.08KG



www.polymak.co.in

Polymak®

PM60JGE SPARE PARTS LIST

No	Parts Name	Pcs	Seri No	INR	No	Parts Name	Pcs	Seri No	INR
1	Right Handle	1			43	Seal	1		
2	Light Brush Cover	1			44	Pin 6*30	1		
3	Switch	1			45	Pin 5.02*23	3		
4	Cable 2*0.75	1			46	Pin 3*9.8	2		
5	Cord Protector	1			47	Oiless Bearing 10*14*10	1		
6	Cord Clamp	1			48	Screw Stm4*60	4		
7	Screw St4*14	2			49	Screw Stm4*16	6		
8	Speed Controller	1			50	Screw Stm4*40	1		
9	Rubber Ring	3			51	Screw Stm3*9	1		
10	Pulley Holder	1			52	Left Handle	1		
11	Pin 4*34	1			53	Left Brush Cover	1		
12	Pin 4.2*20	1			54	Shaft	1		
13	Pulley	1			55	Screw M6*7			
14	Screw St4*14	3			56	Screw M6*8	1		
15	Sleeve 8.5*14*10	1			57	Clamp	1		
16	Front Cover	1			58	Rubber Washer	1		
17	Carrier	1			59	Washer 16*10.2*0.3	1		
18	Guide	1			60	Washer	1		
19	Screw M4*12	2			61	Dust Protect Washer	1		
20	Needle Bearing 12*7*6	1			62	Steel Wire	1		
21	Screw M5*16	2			63	Plastic Cover	1		
22	Washer 9	1			64	Ring 5	1		
23	Cam	1			65	Steel Ball M4	1		
24	Washer 26.5*35*0.5	2			66	Spring 0.4*3.8*15	1		
25	Balance Weight	2			67	Lever	1		
26	Fork	1			68	Allium Base	1		
27	Needle Bearing Hk0910	2			69	Support	1		
28	Gear	1			70	Ring 6	1		
29	Washer 9*21.5*0.5	1			71	Screw M6*22			
30	Spindle	1			72	Steel Base	1		
31	Rubber Ring	1			73	Screw M5*8	4		
32	Bearing 607-2rs	1			74	Baffle Plate	1		
33	Washer	/			75	Field Coil	1		
34	Armature	1			76	Housing	1		
35	Bearing 608-2rs	1			77	Carbon Brush	2		
36	Screw M4*10	3			78	Brush Holder	2		
37	Gearcase	1			79	Spring	2		
38	Screw Stm4*18	2							
39	Paper Washer	1							
40	Screw M4*12	1							
41	Guide Holder	1							
42	Spring 0.4*4.1*10.5	2							