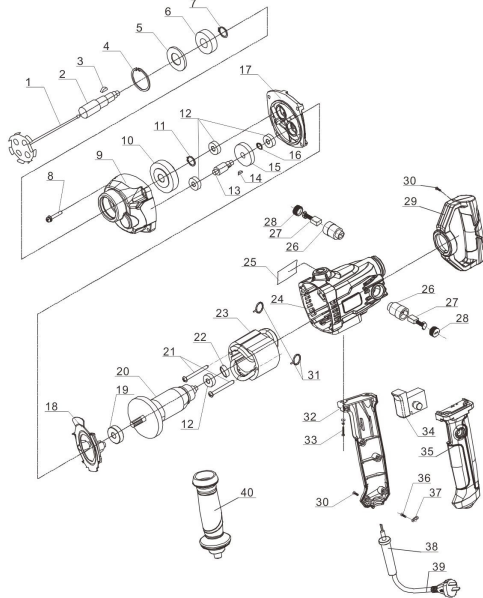


Polymak®

PM16MD 16MM ELECTRIC MIXER

| | |
|----------------------|----------|
| Dia.Of Mixing Wheel: | 160mm |
| No load speed: | 750r/min |
| Power: | 880W |
| Spindel size: | M12 |
| Net weight: | 2.1KG |



www.polymak.co.in

Polymak®

PM16MD SPARE PARTS LIST

| No | Name Of Parts | Pcs | Seri No | INR |
|----|--------------------|-----|---------|-----|
| 1 | Mixer rod | | | |
| 2 | Spindle | | | |
| 3 | Key 4*5*13 | | | |
| 4 | Washer 40 | | | |
| 5 | Dustproof washer | | | |
| 6 | Bearing 6203 | | | |
| 7 | Washer 17 | | | |
| 8 | Screw ST5*35 | 4 | | |
| 9 | Gear Box | | | |
| 10 | Big Gear | | | |
| 11 | Washer 14 | | | |
| 12 | Bearing 608 | 4 | | |
| 13 | Gear shaft | | | |
| 14 | Key 3*3.7*10 | | | |
| 15 | Small gear | | | |
| 16 | Washer 10 | | | |
| 17 | Middle case | | | |
| 18 | Guide air gasket | | | |
| 19 | Bearing 6200 | | | |
| 20 | Armature | | | |
| 21 | Screw ST4*60 | 2 | | |
| 22 | Bearing Sleeve | | | |
| 23 | Filed Coil | | | |
| 24 | Housing | | | |
| 25 | Name Plate | | | |
| 26 | Brush Holder | 2 | | |
| 27 | Carbon Brush | 2 | | |
| 28 | Brush Holder cover | 2 | | |
| 29 | Back handle | | | |
| 30 | Screw ST4*14 | 8 | | |
| 31 | Filed Coil Spring | 2 | | |
| 32 | Light handle | | | |
| 33 | Screw ST5*19 | 4 | | |
| 34 | Switch | | | |
| 35 | Left Handle | | | |
| 36 | Screw ST4*14 | 2 | | |
| 37 | Cable Parts | | | |
| 38 | Cable Sleeve | | | |
| 39 | Cable | | | |
| 40 | Side Handle | | | |