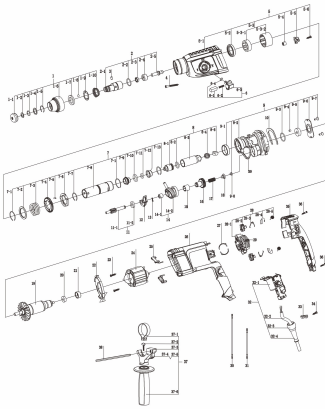


Polymak®



PM25RH-DY ROTARY HAMMER
 Drill Capacity: 26mm
 No-load speed: 0-1350rpm
 Power: 950W



www.polymak.co.in

Polymak®

PM25RH-DY SPARE PARTS LIST

No	Parts Name	Pcs	Seri No	INR	No	Parts Name	Pcs	Seri No	INR
1	Protective sleeve assy	1			7.4	Colletted gear	1		
1.1	Protective cap	1			7.5	Storage Pin	3		
1.2	Washer	1			7.6	Catch disc	1		
1.3	Snap ring	1			7.7	Snap ring	1		
1.4	Rearring ring	1			7.8	Cylinder	1		
1.5	Snap ring	1			7.9	Guide bushing	1		
1.6	Protection sleeve	1			7.10	O-ring	1		
1.7	Thrust ring	1			7.11	O-ring	1		
1.8	Ball	1			7.12	Clamping bushing	1		
1.9	Holding plate	1			7.13	Snap ring	1		
1.10	Spring	1			8	Piston assy	1		
2	Drill bushing assy	1			8.1	Slider	1		
2.1	Ball bush sleeve	1			8.2	O-ring	1		
2.2	O-ring	1			8.3	Piston	1		
2.3	Oil seal	1			8.4	Slavin ring	2		
2.4	Thrust ring	1			8.5	Piston Pin	1		
2.5	Impact ball	1			9	Intermediate flange assy	1		
3	Pin	4			9.1	Bushing	1		
4	Screw STA 8x45	4			9.2	Intermediate flange	1		
5	Gear housing assy	1			9.3	O-ring	1		
5.1	Gear housing	1			9.4	Oil cone	1		
5.2	Oil seal	1			9.5	Ball bearing 609	1		
5.3	Bushing assy	1			9.6	End Shield	1		
5.3.1	Needle sleeve H3012	1			9.7	Screw M4*10	2		
5.3.2	Bushing	1			9.8	Conical washer	1		
5.4	Needle sleeve H40700	1			10	Holding plate	1		
5.5	Tab washer	1			11	Toothed shaft assy	1		
5.6	Screw STA 2*13	1			11.1	Toothed shaft	1		
6	Selector knob assy	1			11.2	Ball bearing 609	1		
6.1	Switch button	1			12	Shift lock	1		
6.2	Compression spring	1			13	Spring clip	1		
6.3	Selector knob	1			14	Drive and shaft assy	1		
6.4	O-ring	1			14.1	Needle sleeve H60008	1		
7	Telex assy	1			14.2	Drive and shaft	1		
7.1	Snap ring	2			15	Impact sleeve H3012	1		
7.2	Supporting disc	1			16	Gear	1		
7.3	Compression spring	1			17	Compression spring	1		

Polymak®

PM25RH-DY SPARE PARTS LIST

No	Parts Name	Pcs	Seri No	INR	No	Parts Name	Pcs	Seri No	INR
18	Bushing assy	1							
19	Armature	1							
20	Ball bearing 607	1							
21	Rubber bearing sleeve	1							
22	Air deflector ring	1							
23	Screw ST3.9*16	2							
24	Felt	1							
25	Suppressor box	2							
26	Motor housing	1							
27	Switch contact	2							
28	Brush holder set	1							
28.1	Brush holder	1							
28.2	Brush holder assy	2							
28.3	Pin	2							
28.4	Carbon brush	2							
28.5	Spring	2							
29	Switch button	2							
30	Line 145mm	4							
31	Line Sleeve	4							
32	ON/OFF Switch assy	1							
32.1	ON/OFF Switch	1							
32.2	Coil	1							
32.3	Coil guard	1							
32.4	Coil wire	1							
33	Coil clamp	1							
34	Screw (ST3.9*16)	2							
35	Housing cover	1							
36	Screw (STA2x5)	3							
37	Auxiliary handle set	1							
37.1	Clamping Band	1							
37.2	T-Bolt	1							
37.3	Clamp holder	1							
37.4	Red button	1							
37.5	Compression spring	1							
37.6	Auxiliary handle	1							
38	Digital gauge	1							
39	O-ring	1							