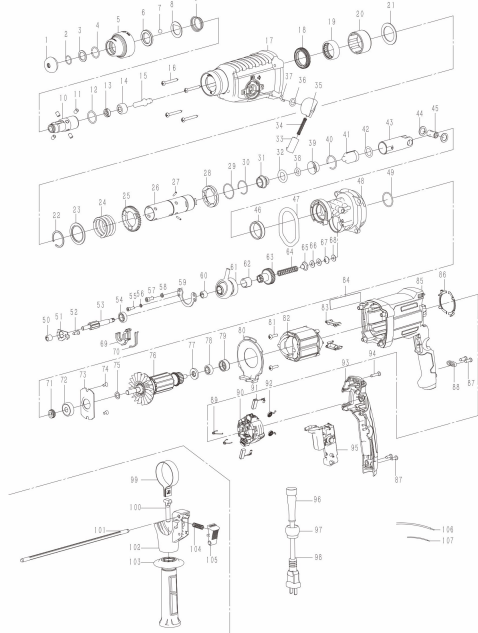




PM26RH 26MM ROTARY HAMMER
 Max. drilling capacity: 26mm
 No load speed: 0-1150r/min
 Power: 850W
 Max impact energy: 3.0J
 Net weight: 3.25KG



PM26RH SPARE PARTS LIST

No	Parts Name	Pcs	Part No	INR	No	Parts Name	Pcs	Part No	INR
1	Cap	1			57	Screw M5*12	2		
2	Ring spring Φ14×1.5	1			58	Spring washer 5	2		
3	Washer Φ16×Φ22×1.5	1			59	Rocker bearing plate	1		
4	Ring spring 18.5*2	1			60	Needle bearing 0908	1		
5	Chuck cover	1			61	Rocker bearing	1		
6	Iron ring	1			62	Needle bearing K15*18*14	1		
7	Steel ball Φ7.144	1			63	Gear shaft	1		
8	Gasket	1			64	Clutch spring	1		
9	Spring	1			65	Clutch spring seat	1		
10	Tool Hold Complete	1			66	Washer	2		
11	Pin Φ6×8.8	4			67	Clutch spring seat(iron)	1		
12	O ring Φ20.9×2.1	1			68	Rubber pad Φ4×g12×0.6	1		
13	Oil seal Φ16×Φ8.5×5	1			69	Plastic Fork	1		
14	Sleeve	1			70	Ring Spring	1		
15	Impact Bolt	1			71	Oil guide ring	1		
16	Screw ST4.5*42	4			72	Bearing 609	1		
17	Gear box (3 mode)	1			73	609 bearing gland	1		
18	Oil seal Φ41×Φ30×7	1			74	Screw M4*8	2		
19	Needle bearing HK3012	1			75	Retaining ring 14*9*0.7	1		
20	Sleeve	1			76	Armature	1		
21	Washer Φ30.2×Φ43×1.5	1			77	Dust proof ring	1		
22	Ring Spring	1			78	Bearing 607	1		
23	Washer	1			79	Bearing housing 607	1		
24	Spring	1			80	Guide ring	1		
25	Big Gear	1			81	Screw ST4.2*16	2		
26	Cylinder	1			82	Stator	1		
27	Pin Φ2.5×12	3			83	Stator pin Ass.	2		
28	Ring	1			84	Sticker	1		
29	Ring Spring	1			85	Motor housing	1		
30	Ring Spring	1			86	Semicircular Spring washer	2		
31	Hammer Rod Sleeve	1			87	Screw ST4.2×16	4		
32	O ring Φ16.1×4.5	1			88	Switch board	1		
33	Knob	1			89	Torsion spring	2		
34	Spring	1			90	Carbon brush frame	1		
35	Shifting Stall Knob	1			91	Carbon brush	2		
36	O Ring 10.6*2.7	1			92	Coil spring	2		
37	Iron Core	1			93	Handle cover	1		
38	O ring 9*3.5	1			94	Screw ST4.2×22	1		
39	Sleeve	1			95	Switch	1		
40	Steel Cable Baffle Ring 28*2	1			96	Cord guard	1		
41	Piston	1			97	Ball	1		
42	O Ring 15*3	1			98	Power supply cord	1		
43	Aluminum Cylinder	1			99	Grip spring	1		
44	Gasket	2			100	T screw	1		
45	Pin	1			101	Depth gauge	1		
46	Stents Bushing	1			102	Grip base	1		
47	O ring 52.2*7.4	1			103	Handle	1		
48	Aluminum Bracket	1			104	Spring	1		
49	O ring Φ25.8×1.8	1			105	Side Handle button	1		
50	Needle Bearing	1			106	Connection wire 120mm	1		
51	Gasket	1			107	Connection wire 70mm	1		
52	Screw ST4.2*12	1			108				
53	Middle shaft	1			109				
54	Bearing 699	1			110				
55	Screw M4*12	2			111				
56	Spring washer 4	2							