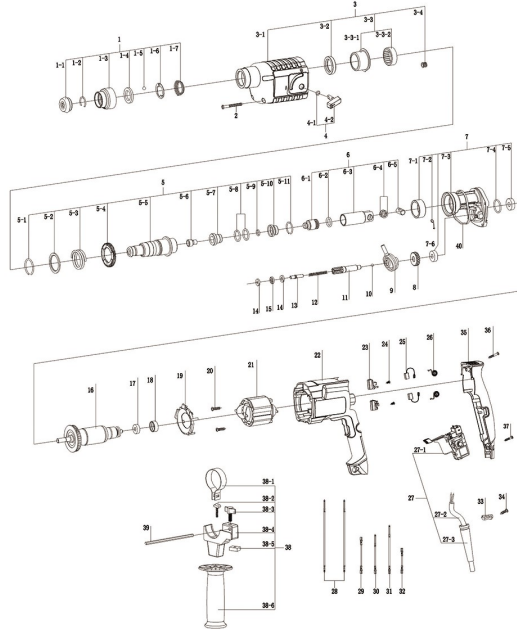


Polymak®

PM20RH-DY ROTARY HAMMER

Max. drilling capacity: 22mm
 No load speed: 0-1000r/min
 Power: 800W
 Weight: 2.6kg



www.polymak.co.in

Polymak®

PM20RH-DY SPARE PARTS LIST

No	Code	Parts Name	Pcs	INR	No	Code	Parts Name	Pcs	INR
1	ZP-2001-01	Protective Sleeve Assy	1		7-6	608-22	Ball bearing 608	1	
1-1	XJ-2001-01	Protective Cap	1		8	JG-2001-10	Cylindrical g	1	
1-2	TH-2001-01	Retaining Ring19x2	1		9	ZJ-2001-03	Drive end shi	1	
1-3	MS-2001-06	Protection Sleeve	1		10	GT-2001-02	Ballj φ5	1	
1-4	MC-2001-05	Thrust Ring	1		11	JG-2001-08	Toothed shaft	1	
1-5	GT-2001-01	Ball CT-14	1		12	TH-2001-07	Spring	1	
1-6	MC-2001-04	Holding Plate	1		13	JG-2001-09	Pin	1	
1-7	TH-2001-02	Spring	1		14	ZC-PC2001	Washer	2	
2	LD-2001-01	Screw S4.6x57.5	4		15	ZC-ARK0814	Needle sleeve A40614	1	
3	ZP-2001-02	Gear Housing Assy	1		16	ZJ-2001-01	Armature	1	
3-1	MS-2001-14	Gear Housing	1		17	607-2RS	Ball bearing 607	1	
3-2	ZP-2001-02	Oil Seal	1		18	XJ-2001-09	Rubber bearin	1	
3-3	ZP-2001-08	Needle Roller Bearing A	1		19	MS-2001-17	Air deflector	1	
3-3-1	MC-2001-06	Needle Roller Bearing	1		20	LD-2001-02B	Screw st3.9x1	4	
3-3-2	ZC-HK3012	Needle Bearing Hk3012	1		21	ZJ-2001-02	Field	1	
3-4	ZC-HK0608	Needle Bearing Hk0608	1		22	MS-2001-15	Motor housing	1	
4	ZP-2001-03	Selector Knob Assy	1		23	GT-2001-05-B	Brush holder	2	
4-1	XJ-2001-03	O-ring	1		24	LD-2001-03	Screw st2.9x8	4	
4-2	MS-2001-18	Slector Knob	1		25	GT-2001-07-A	Carbon brush	2	
5	ZJ-2001-06	Ratchet Sleeve Assy	1		26	TH-2001-08		2	
5-1	TH-2001-03	Snap Ring	1		27	ZJ-KG43-2001-01	Switch assy	1	
5-2	MC-2001-01	Supporting Disc	1		27-1	KG-413/A-2001	Switch	1	
5-3	TH-2003-01	Compression Spring	1		27-2	dx	Cord	1	
5-4	JG-2203-04	Cylindrical Gear	1		27-3	XJ-2001-10	Cord guard	1	
5-5	JG-2001-01	Ratchet Sleeve	1		28	MC-2001-12	Connecting cable	2	
5-6	JG-2001-02	Impact Bolt	1		29	MC-2003-04	Connecting cable	1	
5-7	JG-2001-03	Guide Bushing	1		30	MC-2003-03	Connecting cable	1	
5-8	XJ-2001-04	O-ring	2		31	MC-2003-02	Connecting cable	1	
5-9	XJ-2001-05	O-ring	1		32	MC-2003-01	Connecting cable	1	
5-10	JG-2001-04	Damping Bushing	1		33	MS-2001-05	Cord clamp	1	
5-11	TH-2001-05	Ring	1		34	LD-2202-03	Screw st3.9x1	2	
6	ZP-2001-06	Piston Assy	1		35	MS-2001-16	Housing cover	1	
6-1	XJ-2001-06	Striker	1		36	LD-2001-05	Screw st4.2*19	1	
6-2	XJ-2001-06	O-ring	1		37	LD-2001-10	Screw st4.2*16	2	
6-3	GT-2001-03	Piston	1		38	FZ-0101	Auxiliary han	1	
6-4	MC-2001-03	Shim Ring	2		38-1	MC-1803-01	Clamping band	1	
6-5	JG-2001-07	Piston Pin	1		38-2	LD-2001-08	T-bolt	1	
7	ZJ-2001-07	Intermediate Flange Ass	1		38-3	MS-2001-09	Red button	1	
7-1	GT-2001-04	Bushing	1		38-4	MS-2001-08	Clamp holder	1	
7-2	TH-2001-06	Ring	1		38-5	MS-2001-10	Button	1	
7-3	ML-2001-01	Intermediate Flange	1		38-6	MS-2001-07	Auxiliary han	1	
7-4	XJ-2001-08	O-ring	1		39	JG-2001-12	Depth gauge	1	
7-5	609-2RS	Ball Bearing 609	1		40	XJ-2001-07	O-ring	1	