

Polymak®

Solutions Provider For Industry & Trade

Polymak Tools(India)Pvt.Ltd

186/187, P.H Road,Alsa Towers,Kilpauk,
Chennai – 600 010,

Tel. : +91-44-48631869

E-mail : info@polymak.co.in

Visit us at : www.polymak.co.in

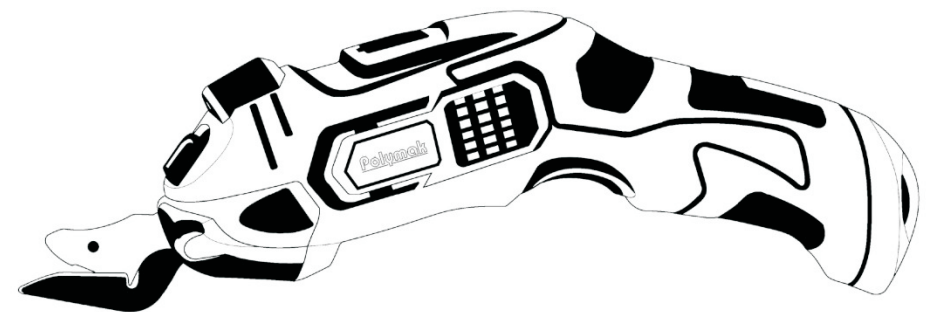
Polymak®

Solutions Provider For Industry & Trade

CORDLESS COTTON SHEAR


PM-CCS-3.6VB

INSTRUCTION MANUAL




Read and follow all safety precautions in instruction manual.

Specifications

Item No	PM-CCS-3.6VB	
Voltage	3.6V 	
No-load Speed	11000 /min	
Battery Capacity:	3.6V	
Max Cutting Capacity	cotton fabric	8 mm
	felt , soft leather, corrugated paperboard	6 mm
	plastic/cloth carpet, PVC plastic	3 mm
	plant stem	2 mm
	hard leather, hard paperboard	1.5 mm
	Tin/aluminium	0.4 mm
Charge	Input:100-240V ~	

NOTE:1.We are constantly trying to improve the quality of our products, and may change the appearance,parameters and certain constructs of our products without prior notice.
2.The pictures are for reference only.

General Safety Regulations For Power Tools

 **WARNING!**Read all safety warnings, instructions,pictures and provisions.Failure to follow the warnings and instructions may result in electric shock, fire and/or serious injury.

Save all warnings and instructions for future reference.

The term "power tool" in the warnings refers to your electric-operated (corded) power tool or battery-operated (cordless) power tool.

1) Work area safety

- a) Keep work area clean and well lit. Cluttered or dark areas invite accidents.
- b) Do not operate power tools in explosive atmospheres, such as in the presence of flammable liquids, gases or dust. Power tools create sparks which may ignite the dust or fumes.
- c) Keep children and bystanders away while operating a power tool. Distractions can cause you to lose control.

2) Electrical safety

- a) Power tool plugs must match the outlet. Never modify the plug in any way. Do not use any adapter plugs with earthed (grounded) power tools. Unmodified plugs and matching outlets will reduce risk of electric shock.
- b) Avoid body contact with earthed or grounded surfaces, such as pipes, radiators, ranges and refrigerators. There is an increased risk of electric shock if your body is earthed or grounded.
- c) Do not expose power tools to rain or wet conditions. Water entering a power tool will increase the risk of electric shock.
- d) Do not abuse the cord. Never use the cord for carrying, pulling or unplugging the power tool. Keep cord away from heat, oil, sharp edges or moving parts. Damaged or entangled cords increase the risk of electric shock.
- e) When operating a power tool outdoors, use an extension cord suitable for outdoor use. Use of a cord suitable for outdoor use reduces the risk of electric shock.

- f) If operating a power tool in a damp location is unavoidable, use a residual current device (RCD) protected supply. Use of an RCD reduces the risk of electric shock.

NOTE: The term "residual current device (RCD)" can be replaced by the term "ground fault circuit breaker (GFCI)" or "ground leakage circuit breaker (ELCB)".

3) Personal safety

- a) Stay alert, watch what you are doing and use common sense when operating a power tool. Do not use a power tool while you are tired or under the influence of drugs, alcohol or medication. A moment of inattention while operating power tools may result in serious personal injury.
- b) Use personal protective equipment. Always wear eye protection. Protective equipment such as dust mask, non-skid safety shoes, hard hat, or hearing protection used for appropriate conditions will reduce personal injuries.
- c) Prevent unintentional starting. Ensure the switch is in the off-position before connecting to power source and/or battery, picking up or carrying the tool. Carrying power tools with your finger on the switch or energising power tools that have the switch on invites accidents.
- d) Remove any adjusting key or wrench before turning the power tool on. A wrench or a key left attached to a rotating part of the power tool may result in personal injury.
- e) Do not overreach. Keep proper footing and balance at all times. This enables better control of the power tool in unexpected situations.
- f) Dress properly. Do not wear loose clothing or jewellery. Keep your hair, clothing and gloves away from moving parts. Loose clothes, jewellery or long hair can be caught in moving parts.
- g) If devices are provided for the connection of dust extraction and collection facilities, ensure these are connected and properly used. Use of dust collection can reduce dust-related hazards.
- h) Do not let the familiarity of frequent use of a tool stop you from following safety guidelines, A careless action can cause serious injury in an instant.

4) Power tool use and care

- a) Do not force the power tool. Use the correct power tool for your application. The correct power tool will do the job better and safer at the rate for which it was designed.
- b) Do not use the power tool if the switch does not turn it on and off. Any power tool that cannot be controlled with the switch is dangerous and must be repaired.
- c) Disconnect the plug from the power source and/or the battery from the power tool before making any adjustments, changing accessories, or storing power tools. Such preventive safety measures reduce the risk of starting the power tool accidentally.
- d) Store idle power tools out of the reach of children and do not allow persons unfamiliar with the power tool or these instructions to operate the power tool. Power tools are dangerous in the hands of untrained users.
- e) Maintain power tools. Check for misalignment or binding of moving parts, breakage of parts and any other condition that may affect the power tool's operation. If damaged, have the power tool repaired before use. Many accidents are caused by poorly maintained power tools.
- f) Keep cutting tools sharp and clean. Properly maintained cutting tools with sharp cutting edges are less likely to bind and are easier to control.
- g) Use the power tool, accessories and tool bits etc. in accordance with these instructions, taking into account the working conditions and the work to be performed. Use of the power tool for operations different from those intended could result in a hazardous situation.
- h) Keep the handle and grip surface dry and clean without grease. In the event of an accident, a wet handle does not guarantee safe grip and control of the tool.

5) Precautions of Cordless products:

- a) Please use regulation charger. Or may lead to fire.
- b) Please use cordless products when with specified battery. Or may lead to fire.
- c) Please keep battery away from metal objects when unused, like Paper clips, coins, keys, nails, screws and other small metal objects. Preventing battery from touch metal objects. The battery short circuit may cause fire.
- d) Liquid may be out when abusing, please do not touch. Please wash by water if touched. Please ask doctor for

help if eyes are touched. The liquid from battery may lead to corrosion and fire.

e) Do not use damaged or modified battery or tools. Damaged or modified battery can have unpredictable results, causing fires, explosions or injuries.

f) Do not expose battery to fire or high temperatures. Exposure of the battery to fire or temperatures above 130 °C may cause an explosion.

6) Service

- a) Have your power tools serviced by a qualified repair person using only identical replacement parts. This will ensure that safety of the power tools are maintained.
- b) Never repair damaged battery. The battery can only be repaired by the manufacturer or its authorized service provider.
- c) Please follow the instructions in this manual when lubricating oil and changing accessories.
- d) Handle must be dry, clean and oil-free.

Cordless cotton Shear Specific Requirements

1. The machine uses built-in lithium-ion batteries, and the batteries can only be charged by a charger provided with a random device. The use of other batteries or chargers, such as imitations, modified or other brands, carries a risk of injury and personal injury and property damage caused by the explosion of the battery pack.
2. Only the charger can be connected to an appropriate AC power supply.
3. Cutting items should not be too hard to reduce the service life of scissors, or even burn down the machine.
4. Before using the machine, please check whether all parts have abnormal sounds or sparks during operation.
5. Cordless shear must be moistureproof, only indoor use, prohibited in rain or water.
6. Avoid short circuit of charger connection and battery.
7. Only use the original accessories, otherwise it may cause fire, electric shock or personal injury.
8. Only the blades recommended by our company are allowed to be used in order to facilitate the installation and adjustment of the blades. Make sure the blade is sharp before operation.
9. The workpiece must be clamped or compacted, the workpiece can be clamped with a vise or other fixture, and the long workpiece should be installed horizontally and firmly.
10. When clamping the workpiece, changing the position and angle of the workpiece, and disassembling the workpiece, it is necessary to turn off the power supply and make sure that the tool is safe before proceeding.
11. During operation, pay attention to scratch or damage by scrap.
12. If the tool does not rotate or make abnormal noise or vibration during operation, the power supply should be switched off immediately.
13. If the charger cord is damaged, it must be replaced by the manufacturer, special service center or equivalent qualified professional to avoid danger.
14. Don't burn batteries or discard them in fire, which may cause explosions. Don't charge batteries that leak liquid and don't charge non-rechargeable batteries.
15. The battery may leak when the temperature is too high or the battery is overused. If battery leaks get on your skin, wash with soap, then rinse with lemon juice and vinegar. If contact the eye accidentally, should immediately rinse with water, and immediately go to the hospital for examination and treatment.
16. Please recycle and utilize damaged machines, accessories and abandoned battery in accordance with local laws and in an environmentally friendly manner.
17. Don't place the tools and battery in a place where the temperature may reach or exceed 50°C (122° F).

Please keep this instruction.

Tips for maintaining maximum battery life (for rechargeable)

1. Charge the battery before it is completely depleted. When the tool power is low, please stop the tool operation and charge the battery.
2. Don't recharge the fully charged battery. Overcharging will shorten battery life.
3. Please charge the battery at room temperature of 10°C-40°C (50° F-104° F). And charge after the hot battery cools down.
4. If you do not need to use the tool for a long time, please charge the battery every six months.

Operation Instruction

1. Charging operation (figure 1) (for cordless cotton shear)

Firstly, the DC plug of the charger is inserted into the DC hole of the machine and connected to the power supply. This time the machine transparent lampshade position red light, when the red light is off, the battery is full. At this time, the DC plug of the charger should be pulled out from the DC hole of the machine, and the charger should be disconnected from the socket to save energy.

NOTE:

- a) It is normal for the surface of the charger and battery to feel hot while charging. This machine and charger should be used together. No other charger is allowed.
- b) The machine may heat up at high temperatures or after long use. At this time, please do not immediately charge, wait for the battery to cool before charging, otherwise it will shorten the service life of the battery or because the battery overheating can not be charged.

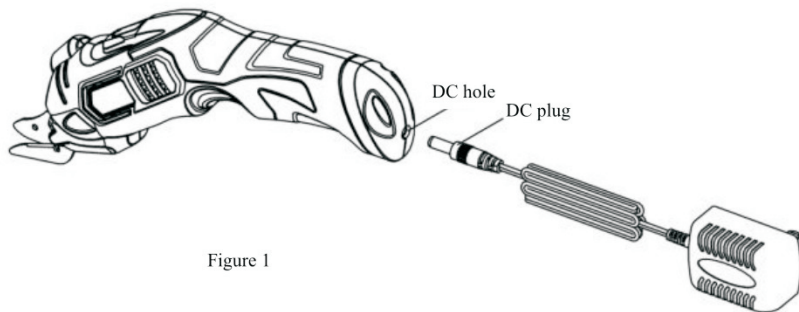


Figure 1

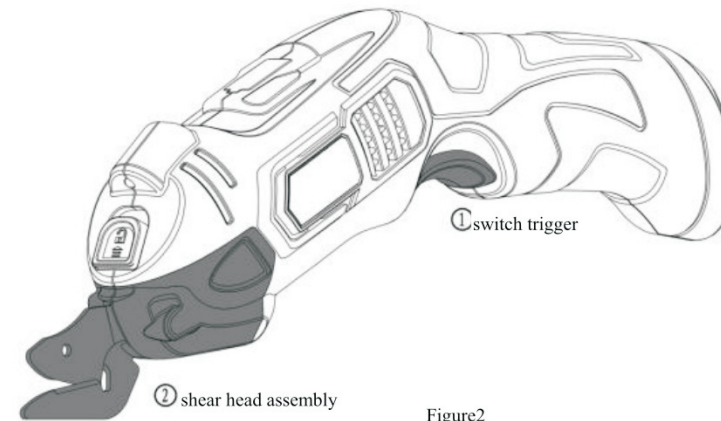


Figure 2

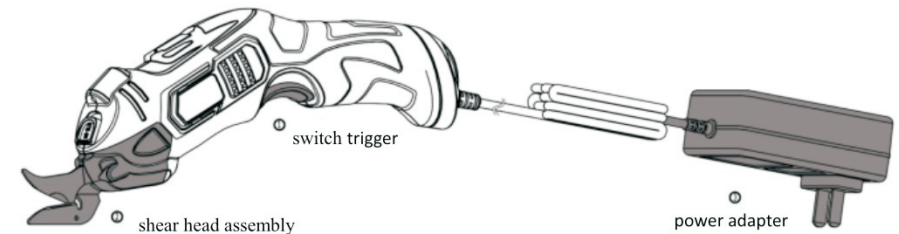


Figure 3

2. Start operation (figure 2, figure 3)

- a) Get the machine first to check whether the machine is complete, whether the shear head assembly 2 is fixed and reliable, after checking is completed, (Fig. 2) Cordless shear, (Fig. 3) Plugging electric shear plug the power adapter 3 into the outlet, press the switch trigger 1 to start the machine, and then align the shear to the place where the material is to be cut to push the shear, and cut straight lines or curves forward according to the lines drawn.
- b) Release the switch trigger 1, the machine will stop running, after the machine completely stops, (plug electric shear will remove the power adapter 3 from the outlet), and then put the machine in a safe position.

3. LED light and power indicator (for cordless cotton shear)

When working normally, press the switch trigger, the machine will run, and LED lighting will be on; Meanwhile, the indicator light will display the current battery level, which can be displayed by the status of three LED lights. Release the switch trigger, LED light off, at the same time, the power indicator is off.

State of the LED	Approximate remaining power
The green, yellow, and red lights keep on	≥ 2/3
The yellow and red lights keep on	≥ 1/3
The red light keep on	< 1/3
All indicator lights out	Insufficient electricity

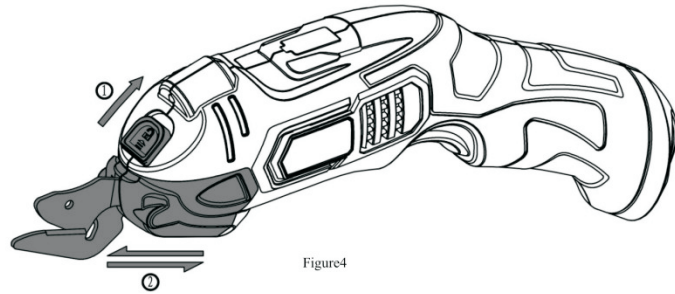


Figure 4

4. Change the shear head assembly (Figure 4)

- a) Pull-up lock push button 1;
- b) Install shear head assembly 2;
- c) Release the lock push button 1 to complete the installation.
- d) Remove shear head assembly 2 and vice versa.

Inspection And Repair

Inspection:

When taking out or taking back, the custodian must conduct a daily inspection; Before use, the user must carry out daily inspection; The units that use the machines must have full-time personnel for regular inspection; At least once a year; The inspection period should also be shortened in hot and humid areas with frequent temperature changes or in areas with poor operating conditions. Timely inspection should be conducted before the plum rain season.

The machine is qualified by regular inspection, the "qualified" mark shall be pasted on the appropriate part of the machine. The "qualified" mark shall be distinct, clear, correct and at least include: machine number, name or mark of inspection unit, name or mark of inspection personnel, effective date.

Repair:

The repair of the machine must be carried out by the repair unit approved by the original production unit. Users and repair departments shall not arbitrarily modify the original design parameters of the machine, and shall not use substitute materials lower than the performance of raw materials and parts inconsistent with the original specifications.

Maintenance And Upkeep

Clean air vents. The vents of the machine must be kept clean. It should be cleaned regularly or at any time when blockage occurs.

Check the screws. Always check whether the screw is securely fastened. If the screw is found to be loose, it should be tightened immediately to avoid accidents.

Clean. Don't use water or chemical cleaning agent and other liquids to clean the machine. Clean it with a dry cloth.

⚠ Notice:

1. Before checking or maintaining tools, be sure to turn off the power and remove the battery.

2. Don't use gasoline, benzene, diluents, alcohol or similar cleaning tools. Otherwise, the tool may become discolored, deformed or cracked. In order to ensure the safety and reliability of the products, the repair, any other maintenance or adjustment shall be done by authorized service center, and the original parts must be used.

Use

This machine is used for cutting cotton fabric, felt products, soft leather, corrugated board, plastic/cloth carpet, PVC plastic sheet, plant stem, hard leather, hard board, tin/aluminum sheet.

- a) The manufacturer reserves the right to change specifications without prior notice.
- b) Specifications and battery may vary by different countries.

NOTE: Make sure you understand the tool before you use it.

Standard Accessories

⚠ NOTE:

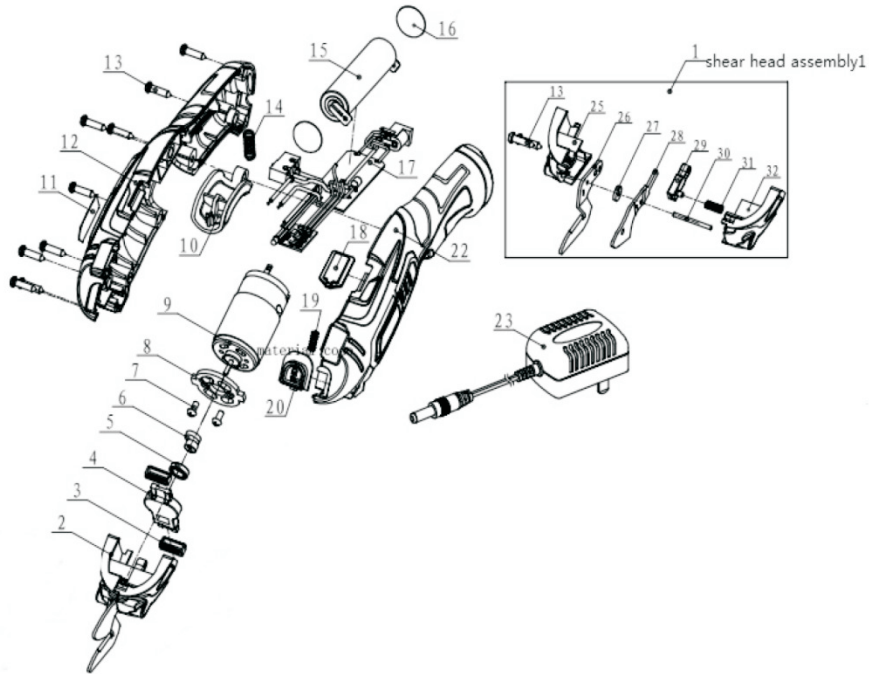
Accessories or devices are used exclusively for the tools listed in this manual. The use of accessories or devices from other factories may cause personal injury. Accessories or devices may only be used for specified purposes.

If you need more information about these options, please contact your local maintenance service center.

1. Shear head assembly 1pc;
2. Charge 1pc;
3. Construction 1pc.

NOTE: All attachments shown in drawings, tables or instructions are not included in the scope of supply.

CORDLESS COTTON SHEAR



Pos.	Description	Parts Code	Q'ty	Pos.	Description	Parts Code	Q'ty
1	shear head assembly1	10701015039	1	19	spring	10303001112	1
2	shear head assembly2	10701015040	1	20	lock push button	10101007209	1
3	sliding sleeve	10101009078	2	21			
4	reciprocating lever	10101007210	1	22	left gear box	10101002164	1
5	bearing MR1107	30104074	1	23	charge	10608001047	1
6	crank block	10306006069	1	24			
7	screw M2.5x6	30201166	2	25	right blade holder	10101011173	3
8	base	10101011170	1	26	fixed blade 1	21201006162	1
9	motor	10608002021	1	27	washer	10101011174	3
10	switch trigger	10101007208	1	28	movable blade 1	21201006163	1
11	nameplate	20301002193	1	29	movable blade sleeve	10101009080	3
12	right gear box	10101002163	1	30	pin	30701107	3
13	screw ST3x14	30202097	13	31	spring	10303001019	3
14	spring	10303001114	1	32	left blade holder	10101011172	3
15	battery	10608001048	1				
16	mat	10401006031	2				
17	switch protection panel assem	10608002022	1				
18	transparent lampshade	10101011169	1				